

Niloé™

Strong points and innovative features of the range



Catalogue number(s): 664 301/335 - 664 503/541 - 664 641
664 701/702/704/705/708/709/710/711/713/714/715/721/725/734/735/737/745
664 748/749/750/751/756/763/766/768/775/777/781/786/787/788/789/791/793/795
664 801/802/805/808/809/810/811/813/814/834/835/837/845/850/851/856/863
664 866/868/875/877/881/887/891/893/895
665 000/001/002/003/009/010/011/012/013/096/099/101/102/103/111/112/115
665 116/118/186/187/188/195/215/216/218/295



ECO-DESIGN

- Reduction of CO₂ emissions by optimising the amounts of materials
- Reduction of laser-etched markings
- Reduction of packaging
- 100% recyclable site protective cover (APET)



INNOVATIVE FUNCTIONS

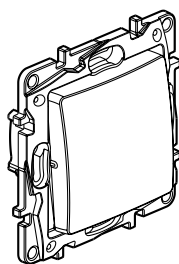
- ZigBee® radio functions
- Heating functions
- Airtight sleeve



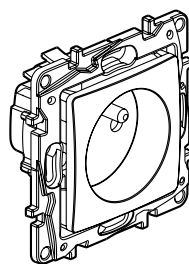
EASY INSTALLATION

Niloé wiring accessories have been designed to save you time.

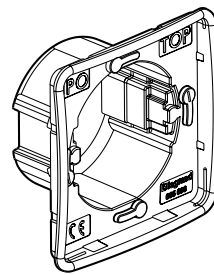
- Automatic terminals
- Prewired sockets
- Horizontal or vertical multi-gang mounting using the same plates



664 701



664 735



665 096



665 099

1. FEATURES OF THE SUPPORT

The mechanisms are supplied with cover plates and supports and a site protective cover.

- Support made of grey (RAL 737) halogen-free polycarbonate
- High impact resistance and torsional strength due to the thickness of the support



2. CONNECTIONS

- The control functions have automatic terminals, except for the roller blind/intermediate switch and 3-gang switch functions, which have screw terminals

- The socket functions have automatic terminals, except for the 2P - 16 A function

The automatic terminal release keys are grey (RAL 735).

Stripping length: 13 mm

Compatible with flexible or rigid cables.

Cable entries for the phase marked with red colour code



3. PLATES AND COVER PLATES

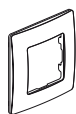
- Poly gloss appearance
- Colour: White (RAL 903) and Ivory (RAL 113)
- Material: - Plate ABS

- Rocker plate ABS
- Socket outlet cover plate polycarbonate
- Halogen-free

- Self-extinguishing: - 850°C/30 s for insulating parts holding live parts in place
- 650°C/30 s for other parts made of insulating materials

- Cover plate (and rocker plate) clipped onto the mechanisms

- Sealed range: IP 44 - IK 4 for socket outlet
- IK 7 for adaptor plate

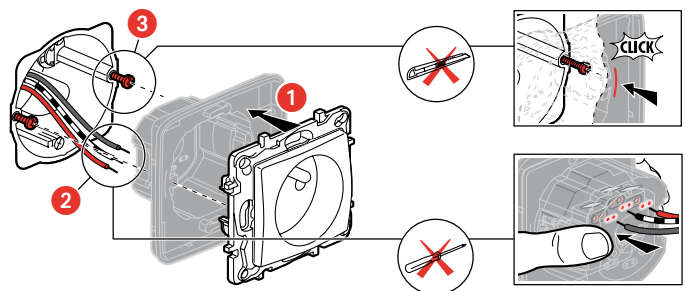


4. AIRTIGHT SLEEVE

Cat. No. : 665 096

Material: SEBS

Suitable for all standard mechanisms (except for the cable outlet).



5. SITE PROTECTIVE COVER

Material: APET, polyester-based plate, very clear, highly resistant to impacts and chemical agents.



6. "Rapido" CLAW

Cat. No. : 665 099

For fixing devices in refurbishment projects

